

Home & Land Package

SA HOUSING CENTRE

\$495,112*

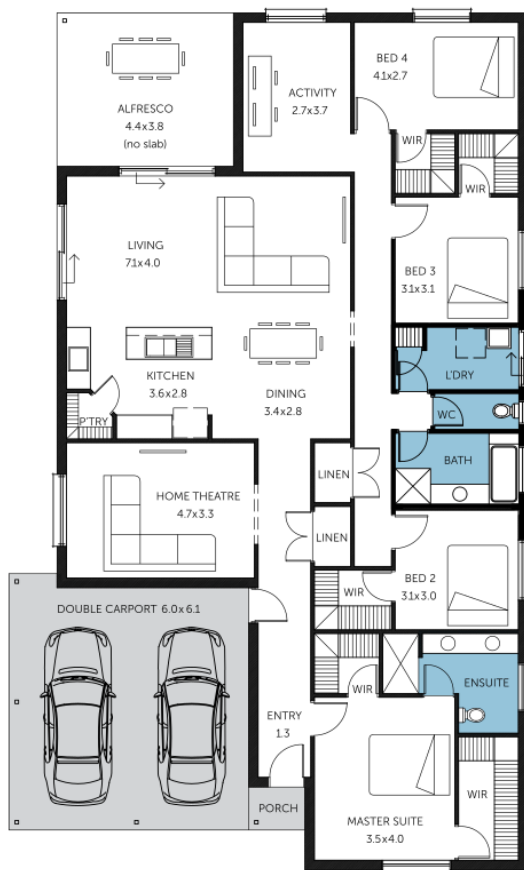
LOT 43 HINDMARSH ESTATE
MURRAY BRIDGE

COLORADO ALFRESCO

FACADE: Frontage Double Garage 16

 4  2  2  2

BLOCK SIZE : 519M² HOUSE SIZE : 256M²



PACKAGE INCLUSIONS

- ✓ Double garage with remote control and single span panel lift door
- ✓ Master bedroom with his and hers WIRs and Ensuite, all other bedroom also with walk in robes!
- ✓ Kitchen with Pantry, overheads, dishwasher and stainless steel cooking appliances (alternative pantry option available)
- ✓ Large home theatre, plus a third activity space or lounge
- ✓ Huge budget for footings and site works
- ✓ All flooring included (timber laminate, with carpet to bedrooms and theatre)
- ✓ 2.7m ceilings throughout
- ✓ Full insulation (internal walls, external walls, all ceilings and garage)
- ✓ Ducted reverse cycle air-conditioning
- ✓ NBN connection
- ✓ A choice of colours and fixtures from the builders range included in the price
- ✓ A choice of facades (currently priced with facade 16)
- ✓ 25 year structural guarantee, 3 month maintenance period

Easy

ENQUIRIES: Chaise McCardle M: 0405 114 478 E: chaisem@sahousingcentre.com.au

Visit us at sahousingcentre.com.au or call **1300 730 187**

*Conditions apply. Certain elevations may not match the particular floor plan published in this package and, as such, all floor plans and elevations are for illustration purposes only. Land subject to availability. The land referred to in this promotion is not owned by us. We make no representation and, to the extent permissible at law, we disclaim all liability, as to the suitability of the land to build on, or the suitability of any house design, or otherwise. You must satisfy yourself of that by inspection, or by taking professional advice, or otherwise. Pricing is indicative only and based on standard costings. Price may vary depending on selections, engineering, council and utility requirements and adjustments to allowances. All packages subject to final council approval. Alan Hickinbotham Pty Ltd ABN 13 007 567 222, RLA 230557. Construction Services Australia Pty Ltd ABN 99 007 641 787, Building Licence G8969.