

Home & Land Package

SA HOUSING CENTRE

\$652,818*

LOT 256 GORDAL STREET
ANGLE VALE

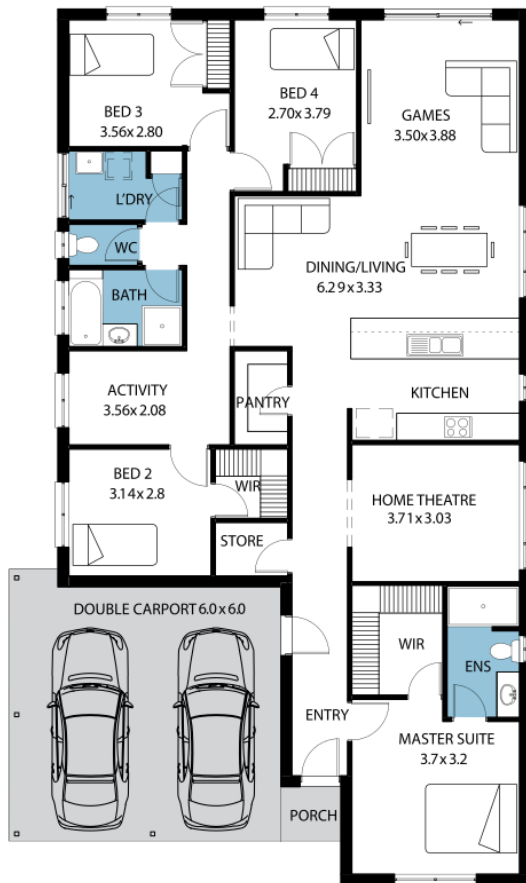
(Miravale Estate)

MAINE

FACADE: Frontage Double Garage 06

 4  3  2  2

BLOCK SIZE : 638M² HOUSE SIZE : 202M²



PACKAGE INCLUSIONS

- ✓ HIGHLY SOUGHT AFTER MIRAVALLE ESTATE!!
- ✓ 2.7 metre ceilings
- ✓ Carpets & timber laminate flooring
- ✓ Stainless steel appliances including FREE dishwasher
- ✓ Ducted heating & cooling
- ✓ Overhead cupboards in the kitchen
- ✓ Modifications available for this floor plan
- ✓ Double garage with auto panel door
- ✓ Generous footings & siteworks allowance
- ✓ 25-year structural guarantee
- ✓ In-house finance available

Easy

ENQUIRIES: Liane Goldsmith M: 0408 280 055 E: lianeg@sahousingcentre.com.au

Visit us at sahousingcentre.com.au or call **1300 730 187**

*Conditions apply. Certain elevations may not match the particular floor plan published in this package and, as such, all floor plans and elevations are for illustration purposes only. Land subject to availability. The land referred to in this promotion is not owned by us. We make no representation and, to the extent permissible at law, we disclaim all liability, as to the suitability of the land to build on, or the suitability of any house design, or otherwise. You must satisfy yourself of that by inspection, or by taking professional advice, or otherwise. Pricing is indicative only and based on standard costings. Price may vary depending on selections, engineering, council and utility requirements and adjustments to allowances. All packages subject to final council approval. Alan Hickinbotham Pty Ltd ABN 13 007 567 222, RLA 230557. Construction Services Australia Pty Ltd ABN 99 007 641 787, Building Licence G8969.