

Home & Land Package

SA HOUSING CENTRE

\$539,613*

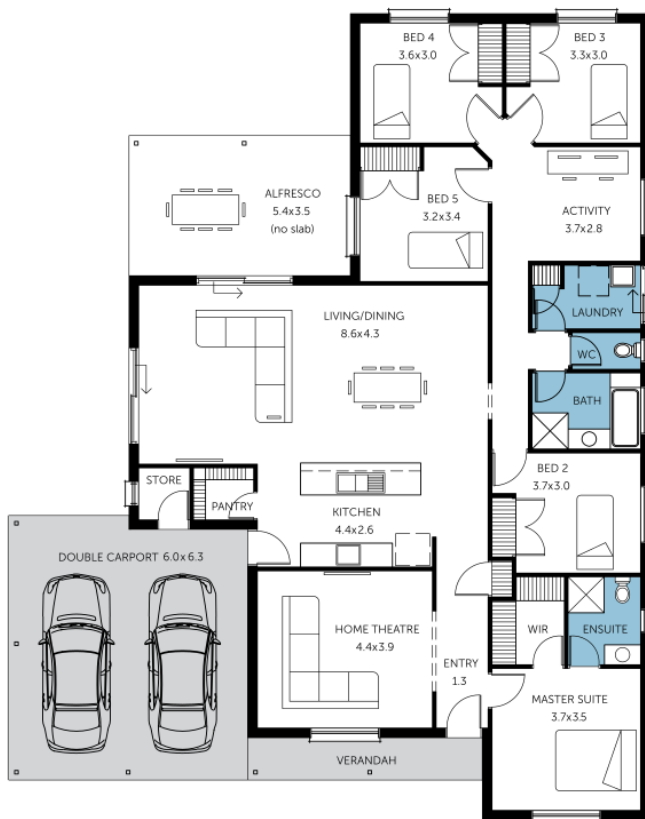
LOT 57 SIR SIDNEY KIDMAN BOULEVARD
KAPUNDA

INDIANA ALFRESCO

FACADE: **Frontage Family** 06

5 2 2 2

BLOCK SIZE : 669M² HOUSE SIZE : 256M²



PACKAGE INCLUSIONS

- ✓ Frontage 6 (as pictured) or your choice
- ✓ \$10,000 discount on build applied (Limited time offer) or monthly promo
- ✓ Ducted Reverse Cycle Air Conditioning
- ✓ 2700mm ceiling height
- ✓ Carpets to Bedroom
- ✓ Timber Laminate to remainder
- ✓ Overhead cupboards to Kitchen, including over fridge
- ✓ Stainless Steel Cooktop, Oven, Westinghouse Retractable Rangehood
- ✓ Dishwasher & Microwave provision
- ✓ Robes to all bedrooms & Flyscreens to all windows (excludes sliding doors)
- ✓ Colorbond Roof, fascias & gutters
- ✓ National Broadband Network Provision (NBN)
- ✓ Whole by Home termite protection
- ✓ Cove Set Cornices to Entry, Living and Dining
- ✓ Milan Semi-Frameless Shower Screens
- ✓ Insulation R2.5 to External Walls R5.0 to Ceiling
- ✓ Siteworks and Accurate Footings Allowance
- ✓ 3 Month Maintenance & 25 Year Structural Guarantee

Easy

ENQUIRIES: Llewelyn Dias M: 0450 912 104 E: llewelynd@sahousingcentre.com.au

Visit us at sahousingcentre.com.au or call **1300 730 187**

*Conditions apply. Certain elevations may not match the particular floor plan published in this package and, as such, all floor plans and elevations are for illustration purposes only. Land subject to availability. The land referred to in this promotion is not owned by us. We make no representation and, to the extent permissible at law, we disclaim all liability, as to the suitability of the land to build on, or the suitability of any house design, or otherwise. You must satisfy yourself of that by inspection, or by taking professional advice, or otherwise. Pricing is indicative only and based on standard costings. Price may vary depending on selections, engineering, council and utility requirements and adjustments to allowances. All packages subject to final council approval. Alan Hickinbotham Pty Ltd ABN 13 007 567 222, RLA 230557. Construction Services Australia Pty Ltd ABN 99 007 641 787, Building Licence G8969.